

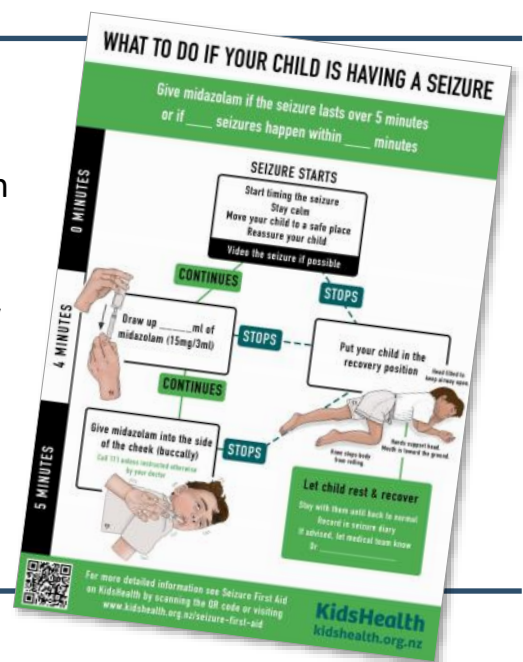
CLINICAL RESOURCES:



The **Newborn Clinical Network** is delighted to share the **Te Whakapuāwai Pēpi o Aotearoa - Newborn Transitional Care Resources** for health professionals. A working group of midwives, nurses, medical staff, Māori and whānau cultural support have contributed to this valuable resource which can be accessed via the [Starship website](#).

WHĀNAU RESOURCES:

The **Neurology Clinical Network**, in collaboration with the **KidsHealth Team**, have released new multiformat resources including illustrations, photos, printable emergency plans and instructional videos to **guide and support whānau managing epilepsy**. These can be accessed on the [KidsHealth website](#).



NETWORK ACTIVITY:



The **Gastroenterology Clinical Network** are using a co-design process to identify ways to improve the **early diagnosis of neonatal liver disease**. The first hui was held on Huria Marae in Tauranga, 45 people attended. Iwi have offered to **pilot and embed new strategies** in their community.

The **Respiratory and Sleep Network** have completed a **stocktake of existing respiratory services** which will be used to inform their next pieces of work.

